

ROTATING MOUNTING BRACKET

For a screen from 55 to 65"



DIGITAL SIGNAGE

Number of screen : 1 screen

Screen size : from 55 to 65"

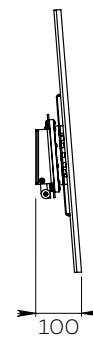
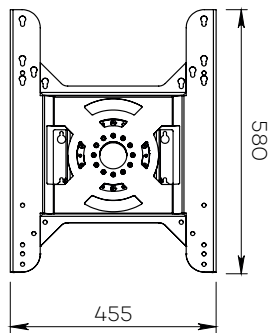
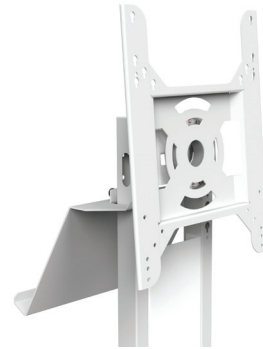
Installation : fixed to the wall or fixed on Axeos' stand

Finish : white or black

Part number :
Upon request



Screen simulation 55"



● SPECIFICATIONS

Screen size	For a screen from 55 to 65"
Part number	Upon request
Material	White or black painted steel
Screen settings	90° rotation (portrait and landscape mode) 4,5° tilt (fixed)
Screen fixing size (VESA)	VESA of 300 x 300 / 350 x 350 / 400 x 400 mm Or other VESA according to the screen
Maximum screen weight	To define according to the Axeos' stand or wall fixing
Mounting bracket weight	6 kg
Installation	Fixed to the wall Or fixed on Axeos' stand
Suitable for Axeos' stand	Obox, Boxer, Easyx, Osyx, Xenon-S and Ekinox

● OPTIONS

Brushed stainless steel finish	P/N: upon request
XL shelf (fixed behind the column) <ul style="list-style-type: none"> • With Obox, Obox XL 	P/N: Obox_XL_shelf
<ul style="list-style-type: none"> • With Boxer, Easyx, Osyx, Xenon-S, Ekinox 	P/N: XL_shelf